

# DMAP-MB Series

# Technical Summary

# DMAP-MB Series

Mobile Type Asphalt Mixing Plant

[www.dmieng.com](http://www.dmieng.com)

### DMI is established with Customer focus

DMAP-MB series plants are developed with basic concept of mobility with ease of production with efficiency without compromising capacity of plant even in harsh environment to suites customer desire with company's passion to develop new ways.

The model, which is the integration of the most advanced technology in the world. It is patent registered.

### We think customer's need of plant

This is the mobile plant designed to access closest to construction site.

Your company no longer needs to worry over asphalt concrete supply on short-term construction.

### The mobile installation is simple

The each main UNIT block is installed with the excel-wheels and kingpins that allow transferring tractor-haul as it does a trailer.

Assembling and disassembling each takes approximately 2-3 days and can be performed without any difficulty.

It can be installed with the minimum foot print is simple to arrange even in narrow spaces.

### It has the best performance

The inverter-motor type belt feeder precisely controls the feed rate per the particle size of aggregate.

The burner, with high-pressure injection and low-noise, delivers complete combustion and operates automatically per specified temperature to save energy.

The vibrating screen, which is loaded with twin-shaft vibrator, is excellent in horizontal screening ability.

The DMI mixer, manufactured with the patented technology, materializes high-spped and precise mixing with the 60-degree array of arms&blades.

The Suction-Injection type AP metering system, preventing measurement error entirely, is also the patented technology of DMI.

Electric heater is installed into any equipment that is required of heating allows to operate any given time, which adds convenience.

Properly positioned cameras allow viewing the operation condition through CCTV monitor screen.

The centralized electric device and computer-controlled system is controlled via the Window system screen, which brings out high level of visual reliability. As a result, the best condition is maintained in the entire manual, semi-automatic, fully automatic operations.

Urgent warranty service is feasible worldwide with the capability of remote controlling via Internet.

Since this model operates in the same mechanism of ST MODEL, the production capacity and quality is not compromised.



(Option)



MODEL	CAPACITY
DMAP-MB 1600	128TON/Hr
DMAP-MB 2000	160TON/Hr
DMAP-MB 2500	200TON/Hr

### DMI Engineering & Manufacturing Co.,Ltd.

81, Haewiangil, Dunpo, Asan, Chungnam, Korea  
 TEL 82-41-532-2900  
 Sales Dept 82-41-532-2910  
 FAX 82-41-532-2904  
 E-MAIL [dmi@dmieng.com](mailto:dmi@dmieng.com)



# DMAP-MB Series

# DMAP-MB Series

Mobile Type Asphalt Mixing Plant

[www.dmieng.com](http://www.dmieng.com)

## Characteristic

DMAP-MB SERIES is called the small Giant in roadway construction sites. There are various choices that will suit your need of plant.



**DMAP-MB 1000**



**DMAP-MB 500**



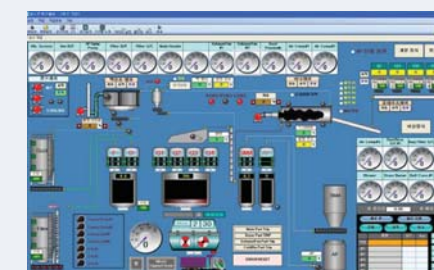
**DMAP-MB 800**

## Mobility & Productivity

It's high Mobility & Productivity at batch mixing system, The mobile asphalt mixing plant is the most popular at small project, repairs and highway maintenance works as well as long country road paving. The main units such as Mixer, Dryer, Burner, Bag Filter, Hot Elevator and Control Cabin are mounted only single trailer. with pre wiring and user friendly control system.



**DMAP-MB 1300**



MODEL	CAPACITY
DMAP-MB 500	40 TON/Hr
DMAP-MB 800	64 TON/Hr
DMAP-MB1000	80 TON/Hr
DMAP-MB1300	104 TON/Hr

### DMI Engineering & Manufacturing Co., Ltd.

81, Haewiangil, Dunpo, Asan, Chungnam, Korea  
 TEL 82-41-532-2900  
 Sales Dept 82-41-532-2910  
 FAX 82-41-532-2904  
 E-MAIL [dmi@dmieng.com](mailto:dmi@dmieng.com)

